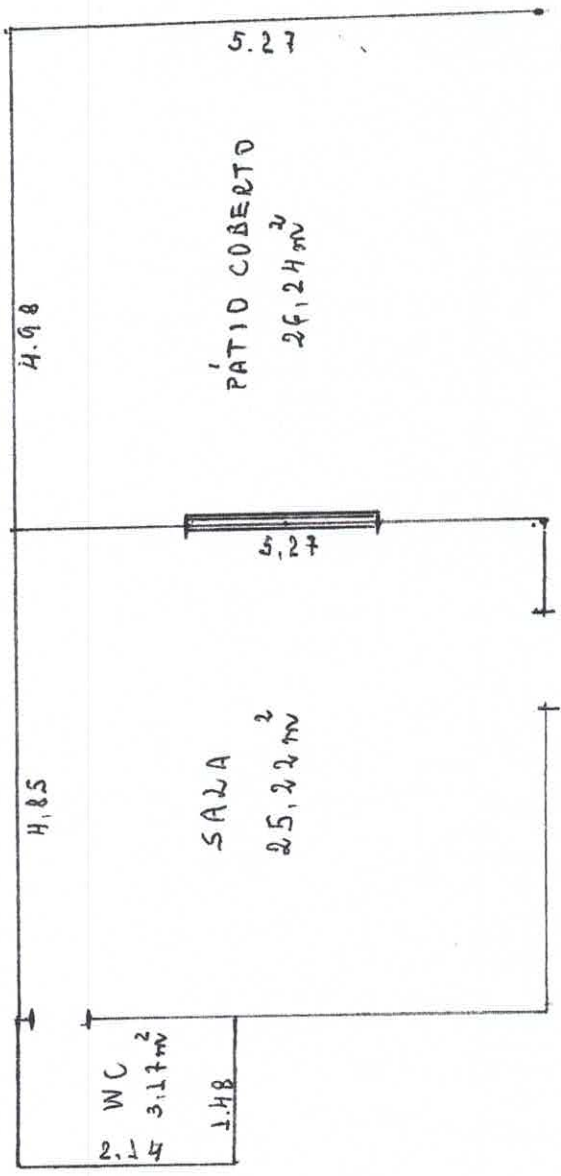
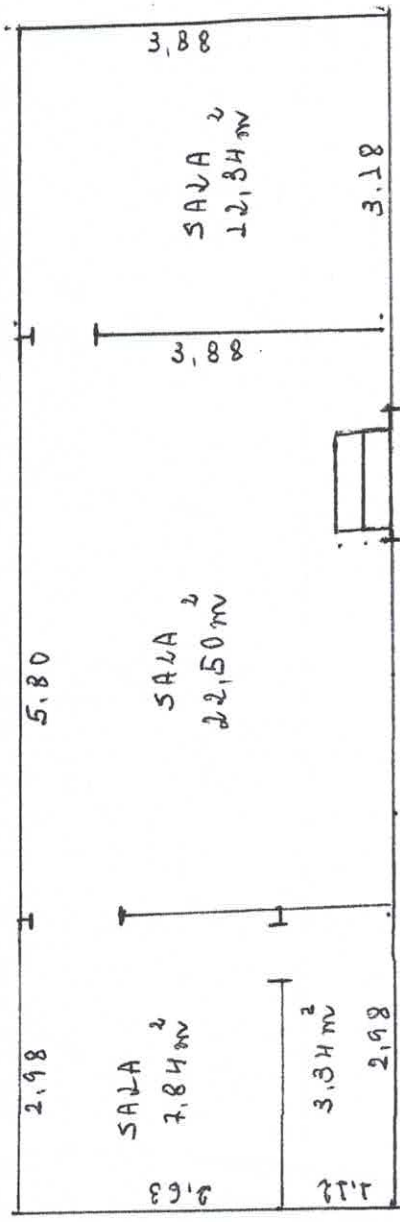


DETRAN - PRÉDIO I



PRÉDIO I - 54,63 m²
 PRÉDIO II - 46,02 m²
 TOTAL - 100,65 m²



DETRAN - PRÉDIO II

-18°
 Proc n° 00/2024
 Rubrica

[Signature]
 Prefeitura Municipal de Estrela
 Desembargador Rômulo de Silva Neto
 Coordenador de Contratos
 Engenharia Civil - CREA 11919416-5